

mahindra
TRUCK AND BUS

mahindra
CRUZIO

**THE SAFEST
AND MOST COMFORTABLE
BUS IN ITS CLASS.**



now
1800-200-3600
24/7 VEHICLE ASSISTANCE BY EXPERTS
A MULTILINGUAL SERVICE



Now fitted with
**FIRE ALARM
PROTECTION
SYSTEM**

mahindra
iMAXX



To know more, give us a missed call on: **1800 315 7799**

NOW HOME-SCHOOL-HOME JOURNEY MADE SAFER AND MOST COMFORATBLE.

The all-new Mahindra CRUZIO school bus makes the comfort of students and drivers it's topmost priority. While ensuring that every ride drives in more profit for the owner.



Safety



FAPS
and FDSS



Rollover
Compliant



Anti
Roll Bar



Anti Skid
Vinyl Flooring



Anti Lock
Braking System

Comfort



Full
Parabolic
Suspension



Lowest Noise,
Vibration and
Harshness



4 Way
Adjustable
driver seat



Spacious
Interiors



Clutch
Booster

FIRE ALARM AND PROTECTION SYSTEM



Buzzer Cum Flasher



Smoke Detector



Water Pipes And Nozzle



Water Tank And Nitrogen Tank



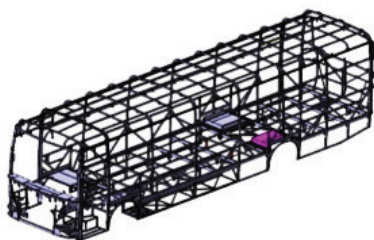
FAPS Control Panel



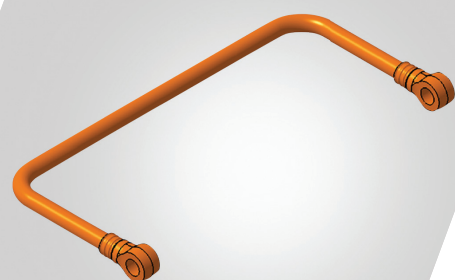
Safer Passenger Area With FAPS System

SCHOOL RIDES JUST GOT MUCH SAFER.

Experience safe and comfortable school transportation with Mahindra CRUZIO School Bus. Our buses are equipped with state-of-the-art safety features and comfortable seating arrangements, ensuring peace of mind for parents and a pleasant ride for students. Trust us for reliable and worry-free school transportation solutions. Mahindra provides the safety features like the Vehicle Tracking System (VTS), Fire Alarm and Protection System (FAPS), the Child Check-Mate Feature and Mahindra iMAXX which is used for tracking of bus.



Roll Over Compliance



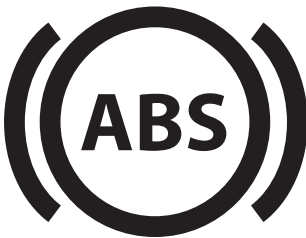
Anti Roll Bar



Child Check Mate Switch



Anti-Skid Vinyl Floor



ABS



Chin Guard



Peep Window



Electronically Operated Battery Switch With Auto Cut-Off

SCHOOL RIDES JUST GOT MORE COMFORTABLE.



Full Parabolic Suspension With ARB



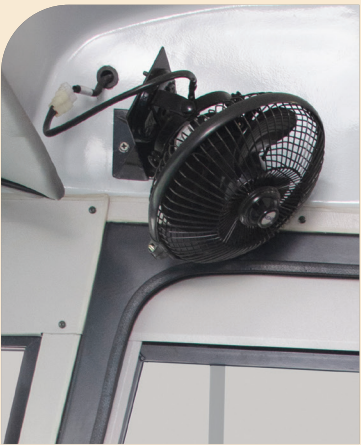
4 Way Adjustable Driver Seat



Comfortable Passenger Seats



Wider Bus Body



Driver Cabin Fan



Tilt And Telescopic Steering



Wider Opening For Driver Door



Clutch Booster



mDi TECH 3.5 LITRE BS6 COMPLIANT ENGINE*

This engine features a 1800 Bar Common Rail System and an Alternator Wastegate Turbocharger for enhanced performance, combining increased power with improved fuel economy.

The gear-driven Air Compressor boosts engine reliability, and the Electronic Viscous Fan maintains a safe temperature range. With a Higher Capacity Alternator, handling greater electrical loads is effortless. The Aluminium Flywheel Housing ensures optimal components and top-tier performance.



*Terms and conditions apply.

FUELSMART* - MILEAGE AND POWER AT THE TOUCH OF A SWITCH.

Mahindra's FuelSmart technology offers a competitive edge for your business, allowing you to select between superior mileage and optimum power based on your business needs. Activate Heavy mode for a full bus and Light mode when running empty, optimising fuel economy.

WHAT'S AT THE HEART OF MAHINDRA CRUZIO?

mDi 2.5 LITRE BS6 COMPLIANT ENGINE

This engine features a 1600 Bar Common Rail System, Alternator Wastegate Turbocharger, and Electronic EGR, collaborating for enhanced performance and higher mileage. The Electronic Viscous Fan maintains a safe engine temperature, while a Higher Capacity Alternator handles increased electrical loads seamlessly.

DOUBLE SERVICE GUARANTEE



GET BACK ON THE ROAD IN
48 HOURS OR GET ₹1,000 PER DAY.*



GET A **36-HOUR GUARANTEED**
TURNAROUND AT OUR WORKSHOP
OR GET ₹3,000 PER DAY.*

OUR WARRANTIES



STANDARDS WARRANTY OF **3 YEARS /**
3 LAC KILOMETERS*



1 YEAR BODY WARRANTY
ON FULLY BUILT BUSES*

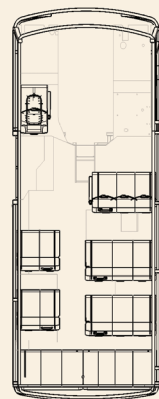
*Terms and Conditions apply.

For more details, please visit www.mahindratruckandbus.com

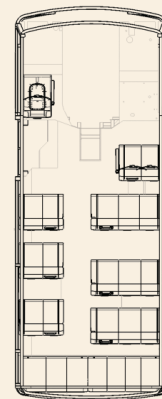
CRUZIO BS6 SPECIFICATIONS

| | | | | | | |
|--------------------------------------|------------------------|------------------------|------------------------|------------------------|------------------------|------------------------|
| Wheelbase (mm) | 2750 | 3100 | 3370 | 3800 | 4250 | 5310 |
| Engine | 2.5 Ltr mDI | 2.5 Ltr mDI | 2.5 Ltr mDI | 2.5 Ltr mDI | 3.5 Ltr mDI Tech | 3.5 Ltr mDI Tech |
| Engine Power | 60.5 Kw @ 3200 rpm | 60.5 Kw @ 3200 rpm | 60.5 Kw @ 3200 rpm | 60.5 Kw @ 3200 rpm | 91.5 Kw @2500 rpm | 91.5 Kw @2500 rpm |
| Engine Torque | 220 Nm @ 1400-2000 rpm | 220 Nm @ 1400-2000 rpm | 220 Nm @ 1400-2000 rpm | 220 Nm @ 1400-2000 rpm | 375 Nm @ 1300-2200 rpm | 375 Nm @ 1300-2200 rpm |
| Clutch Diameter (mm) | 280 | 280 | 280 | 280 | 310 | 310 |
| Brakes | Hydraulic Brake | Hydraulic Brake | Hydraulic Brake | Hydraulic Brake | Air Brake | Air Brake |
| Battery (Amp) | 12V-100 | 12V-100 | 12V-100 | 12V-100 | 12V-100 | 12V-100 |
| Alternator | 110 A | 110 A | 110 A | 110 A | 110 A | 110 A |
| Tyres | 7.50 X 16 - 16 PR | 7.50 X 16 - 16 PR | 7.50 X 16 - 16 PR | 7.50 X 16 - 16 PR | 7.50 R16 LT 16 PR | 8.25 R16 LT 16 PR |
| Fuel Tank (L) | 60 | 60 | 60 | 60 | 120 | 120 |
| GVW (Kgs) | 5010 | 5450 | 6100 | 6700 | 8270 | 9250 |
| GearBox (Manual) | 5 forward,1 reverse | 5 forward,1 reverse | 5 forward,1 reverse | 5 forward,1 reverse | 5 forward,1 reverse | 5 forward,1 reverse |
| DEF Tank Capacity | 13L | 13L | 13L | 13L | 13L | 13L |
| Overall Length x Height x Width (mm) | 5125x2900x2200 | 5820x2900x2200 | 6475x2900x2200 | 7150x2900x2200 | 7925x2986x2200 | 9620x 3001x 2200 |
| TCD (mm) | 11300 | 12500 | 13500 | 15000 | 15800 | 19300 |
| Ground Clearence (mm) | 190 | 190 | 190 | 190 | 183 | 183 |

CRUZIO SCHOOL BUS 3x2 SEATING CAPACITY



21+D



25+D



31+D



36+D

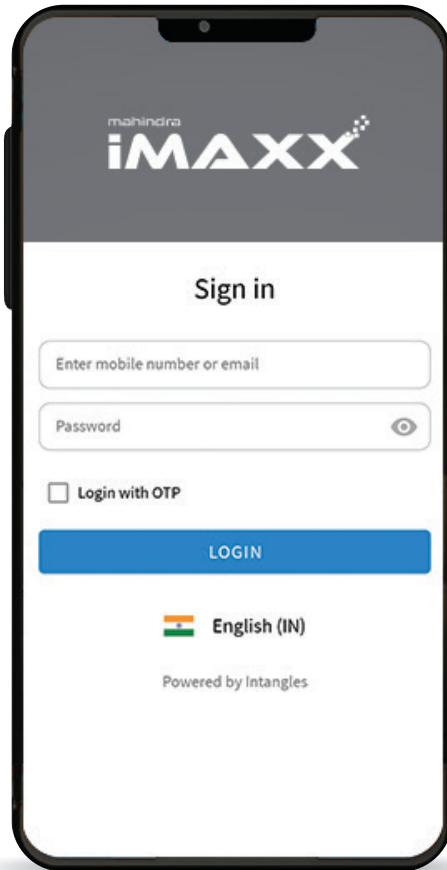


41+D



51+D

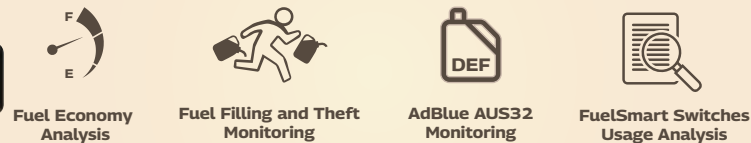
MONITOR YOUR BUS EVERY SINGLE MOMENT.



VEHICLE HEALTH MONITORING



FUEL AND ADBLUE ANALYSIS



DRIVING BEHAVIOUR MONITORING



OPERATIONS AUTOMATION



MAHINDRA AASHRAY MAKES EVERY MOMENT CAREFREE.

Mahindra MCOVER Makes You Feel 3 Times More Secure.

Mahindra brings you MTRUST, the best way to buy used Mahindra trucks. We put each vehicle through 166 tough health checks. Refurbish with only Mahindra spares. All to give you trucks that are as good as new and outperform right from the start.

• UP TO 12 MONTHS WARRANTY • 1/2/3 STAR RATINGS • UP TO 3 FREE SERVICES • ROADSIDE ASSISTANCE • REFINANCE OPTIONS



Corporate: contactmtb@mahindra.com
Customer Care: now24X7@mahindra.com



www.mahindratruckandbus.com



Mahindra and Mahindra Ltd.

Truck and Bus Division, Marketing Division, Mahindra Tower,
3rd Floor, Wing 3, Chakan Industrial Area, Phase IV,
Post - Nighoje, Chakan, Tal Khed, District Pune - 410 501

Note: In view of our policy of continuously improving our products, we reserve the right to alter specifications or design without prior notice and without liability. Illustrations do not necessarily show the vehicle in its standard form. Accessories shown are not part of the standard equipment. Colour shades shown may vary. E. & O.E.

DEALER STAMP



Visit www.mahindratruckandbus.com



MOBILE SERVICE VANS & WORKSHOPS



COUNTRY-WIDE SPARES & SERVICE NETWORK



WHATSAPP US ON: 8484970171

